

NOTES:

1. DATE OF IMAGERY: 2015 (NEW JERSEY GEOGRAPHIC INFORMATION NETWORK WEB MAP SERVICES)
2. SOURCE OF TAX MAP DATE: NEW JERSEY GEOGRAPHIC INFORMATION NETWORK



DESIGNED BY:	DRAWN BY:	CHECKED BY:	SKETCH SHOWING APPROXIMATE TAX LOT LINES OVERLAID ON DIGITAL IMAGERY	
		REVISIONS	JURISDICTION LIMIT HUDSON / ESSEX COUNTY PORT NEWARK / ELIZABETH NEW JERSEY	
		NO.		
DAVID D. RUPNARAIN PROFESSIONAL LAND SURVEYOR N.J. LICENSE NO. 050295			KSE <i>KS ENGINEERS, P.C.</i>	Engineers • Surveyors • Construction Managers 494 Broad Street, Newark, N.J. 07102 Phone: (973) 623-2999, Fax: (973) 623-2988
SCALE:	DATE:	PROJECT NO.:	SHEET NO.:	
1" = 1,000'	03/07/16	2015-1735	INDEX	

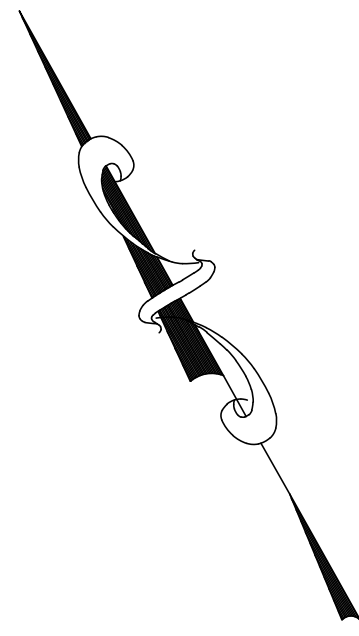


MATCHLINE - SEE SHEET S-002

MATCHLINE - SEE SHEET S-003

NOTES:

1. DATE OF IMAGERY: 2015 (NEW JERSEY GEOGRAPHIC INFORMATION NETWORK WEB MAP SERVICES)
2. SOURCE OF TAX MAP DATE: NEW JERSEY GEOGRAPHIC INFORMATION NETWORK



DESIGNED BY:	DRAWN BY:	CHECKED BY:	SKETCH SHOWING APPROXIMATE TAX LOT LINES OVERLAID ON DIGITAL IMAGERY
			JURISDICTION LIMIT HUDSON / ESSEX COUNTY PORT NEWARK / ELIZABETH NEW JERSEY
			KSE KS ENGINEERS, P.C.
			Engineers • Surveyors • Construction Managers 494 Broad Street, Newark, N.J. 07102 Phone: (973) 623-2999, Fax: (973) 623-2988
DAVID D. RUPNARAIN PROFESSIONAL LAND SURVEYOR N.J. LICENSE NO. 050295	SCALE: 1" = 200'	DATE: 02/19/2016	PROJECT NO.: 2015-1735 SHEET NO.: 1 OF 14

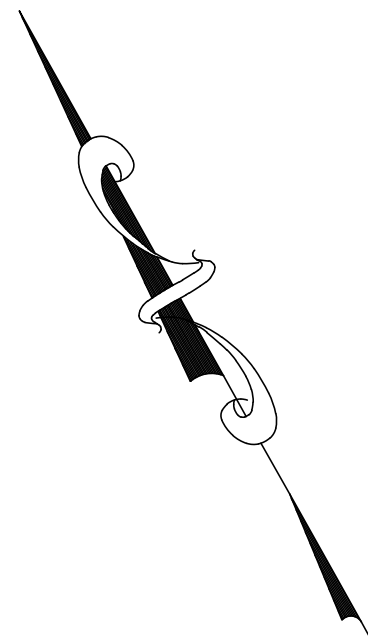
MATCHLINE - SEE SHEET S-001



MATCHLINE - SEE SHEET S-004

NOTES:

1. DATE OF IMAGERY: 2015 (NEW JERSEY GEOGRAPHIC INFORMATION NETWORK WEB MAP SERVICES)
2. SOURCE OF TAX MAP DATE: NEW JERSEY GEOGRAPHIC INFORMATION NETWORK



DESIGNED BY:	DRAWN BY:	CHECKED BY:	SKETCH SHOWING APPROXIMATE TAX LOT LINES OVERLAID ON DIGITAL IMAGERY
		REVISIONS	JURISDICTION LIMIT
		NO.	PORT NEWARK / ELIZABETH
			HUDSON / ESSEX COUNTY NEW JERSEY
			KSE
			Engineers • Surveyors • Construction Managers
			494 Broad Street, Newark, N.J. 07102
			Phone: (973) 623-2999, Fax: (973) 623-2988
DAVID D. RUPNARAIN	SCALE: 1" = 200'	DATE: 02/19/2016	PROJECT NO.: 2015-1735
PROFESSIONAL LAND SURVEYOR N.J. LICENSE NO. 050295			SHEET NO.: 2 OF 14

MATCHLINE - SEE SHEET S-001

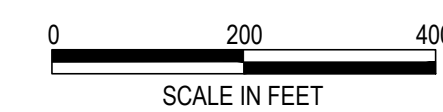
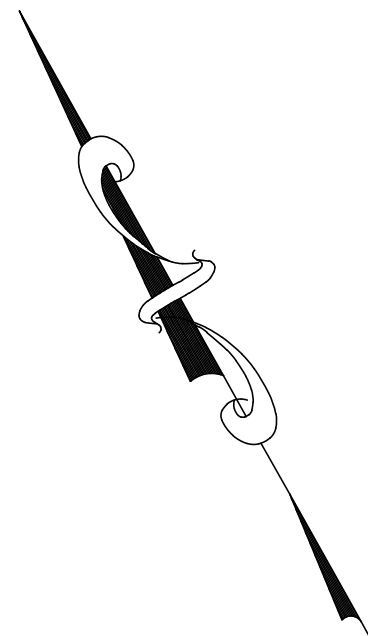


MATCHLINE - SEE SHEET S-004

MATCHLINE - SEE SHEET S-005

NOTES:

1. DATE OF IMAGERY: 2015 (NEW JERSEY GEOGRAPHIC INFORMATION NETWORK WEB MAP SERVICES)
2. SOURCE OF TAX MAP DATE: NEW JERSEY GEOGRAPHIC INFORMATION NETWORK



DESIGNED BY:	DRAWN BY:	CHECKED BY:	SKETCH SHOWING APPROXIMATE TAX LOT LINES OVERLAID ON DIGITAL IMAGERY
		REVISIONS	
		No.	
			JURISDICTION LIMIT PORT NEWARK / ELIZABETH HUDSON / ESSEX COUNTY NEW JERSEY
			KSE KS ENGINEERS, P.C.
			Engineers • Surveyors • Construction Managers 494 Broad Street, Newark, N.J. 07102 Phone: (973) 623-2999, Fax: (973) 623-2988
DAVID D. RUPNARAIN PROFESSIONAL LAND SURVEYOR N.J. LICENSE NO. 050295	SCALE: 1" = 200'	DATE: 02/19/2016	PROJECT NO.: 2015-1735
			SHEET NO.: 3 OF 14

MATCHLINE - SEE SHEET S-002

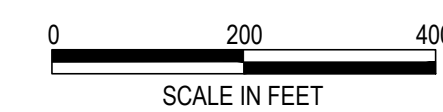
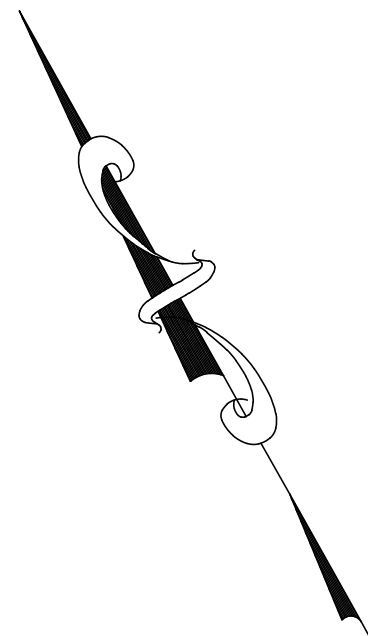
MATCHLINE - SEE SHEET S-003



MATCHLINE - SEE SHEET S-006

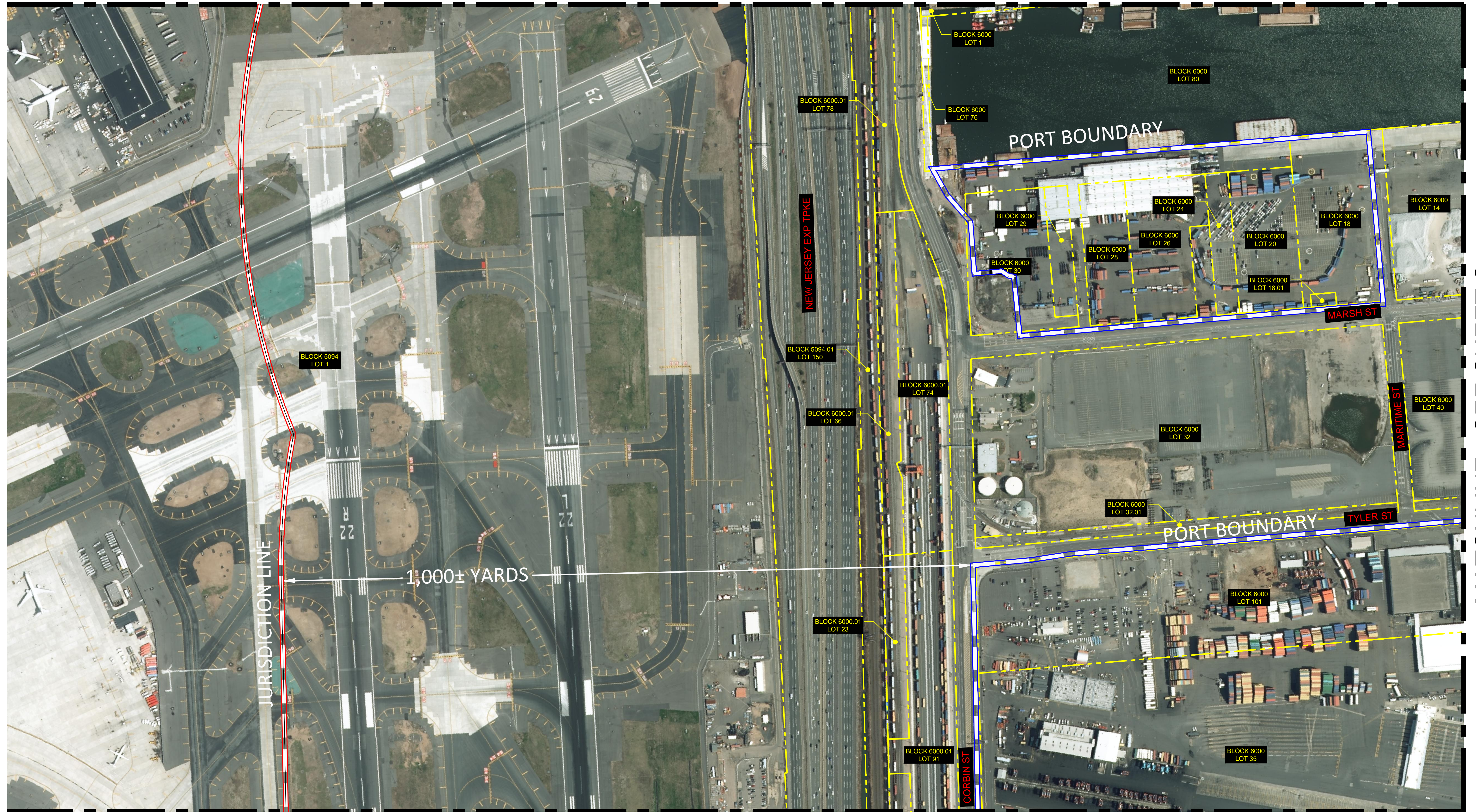
NOTES:

1. DATE OF IMAGERY: 2015 (NEW JERSEY GEOGRAPHIC INFORMATION NETWORK WEB MAP SERVICES)
2. SOURCE OF TAX MAP DATE: NEW JERSEY GEOGRAPHIC INFORMATION NETWORK



DESIGNED BY:	DRAWN BY:	CHECKED BY:	SKETCH SHOWING APPROXIMATE TAX LOT LINES OVERLAID ON DIGITAL IMAGERY
		REVISIONS	
		No.	
JURISDICTION LIMIT HUDSON / ESSEX COUNTY PORT NEWARK / ELIZABETH NEW JERSEY			KSE KS ENGINEERS, P.C. Engineers • Surveyors • Construction Managers 494 Broad Street, Newark, N.J. 07102 Phone: (973) 623-2999, Fax: (973) 623-2988
SCALE:	DATE:	PROJECT NO.:	SHEET NO.:
1" = 200'	02/19/2016	2015-1735	4 OF 14

MATCHLINE - SEE SHEET S-003



MATCHLINE - SEE SHEET S-006

MATCHLINE - SEE SHEET S-007

NOTES:

1. DATE OF IMAGERY: 2015 (NEW JERSEY GEOGRAPHIC INFORMATION NETWORK WEB MAP SERVICES)
2. SOURCE OF TAX MAP DATE: NEW JERSEY GEOGRAPHIC INFORMATION NETWORK



DESIGNED BY:	DRAWN BY:	CHECKED BY:	SKETCH SHOWING APPROXIMATE TAX LOT LINES OVERLAID ON DIGITAL IMAGERY
		REVISIONS	
		NO.	
			JURISDICTION LIMIT PORT NEWARK / ELIZABETH HUDSON / ESSEX COUNTY NEW JERSEY
			KSE KS ENGINEERS, P.C.
			Engineers • Surveyors • Construction Managers 494 Broad Street, Newark, N.J. 07102 Phone: (973) 623-2999, Fax: (973) 623-2988
DAVID D. RUPNARAIN PROFESSIONAL LAND SURVEYOR N.J. LICENSE NO. 050295	SCALE: 1" = 200'	DATE: 02/19/2016	PROJECT NO.: 2015-1735
			SHEET NO.: 5 OF 14

MATCHLINE - SEE SHEET S-004

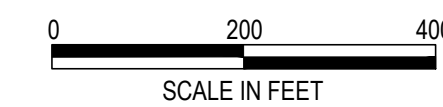
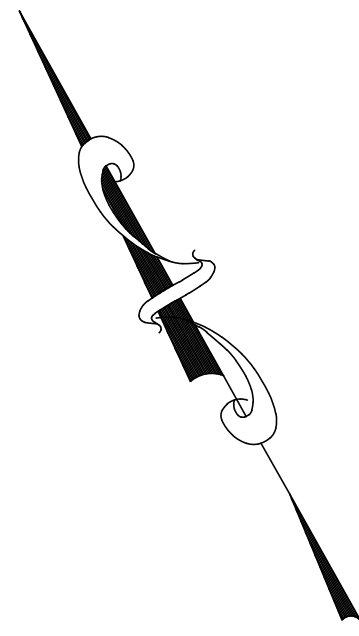
MATCHLINE - SEE SHEET S-005



MATCHLINE - SEE SHEET S-008

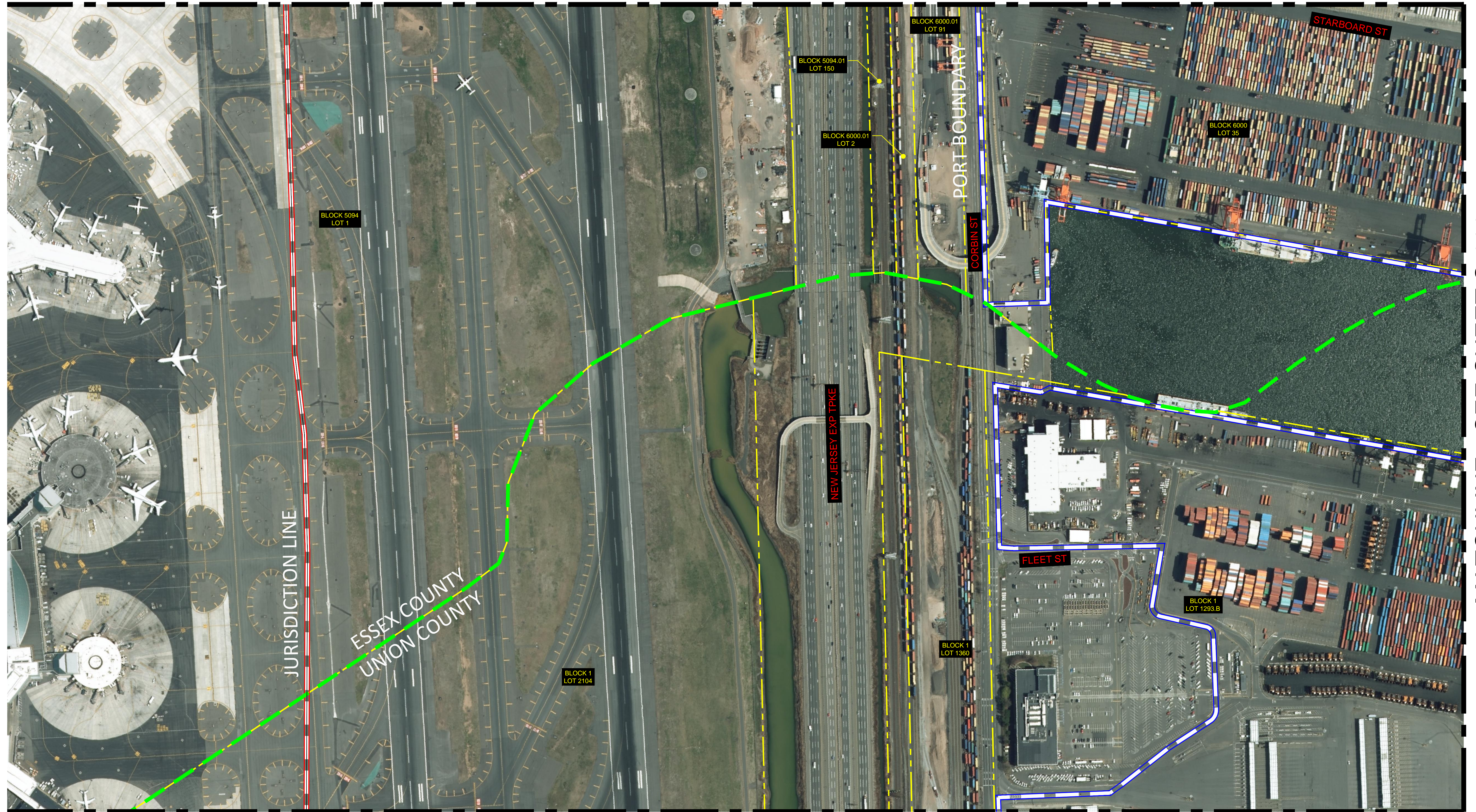
NOTES:

1. DATE OF IMAGERY: 2015 (NEW JERSEY GEOGRAPHIC INFORMATION NETWORK WEB MAP SERVICES)
2. SOURCE OF TAX MAP DATE: NEW JERSEY GEOGRAPHIC INFORMATION NETWORK



DESIGNED BY:	DRAWN BY:	CHECKED BY:	SKETCH SHOWING APPROXIMATE TAX LOT LINES OVERLAID ON DIGITAL IMAGERY
		REVISIONS	JURISDICTION LIMIT
		NO.	HUDSON / ESSEX COUNTY PORT NEWARK / ELIZABETH NEW JERSEY
			KSE
			KS ENGINEERS, P.C.
			Engineers • Surveyors • Construction Managers 494 Broad Street, Newark, N.J. 07102 Phone: (973) 623-2999, Fax: (973) 623-2988
DAVID D. RUPNARAIN	SCALE: 1" = 200'	DATE: 02/19/2016	PROJECT NO.: 2015-1735
PROFESSIONAL LAND SURVEYOR N.J. LICENSE NO. 050295			SHEET NO.: 6 OF 14

MATCHLINE - SEE SHEET S-005

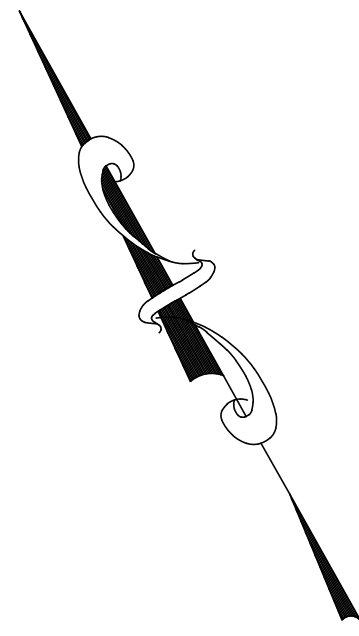


MATCHLINE - SEE SHEET S-008

MATCHLINE - SEE SHEET S-009

NOTES:

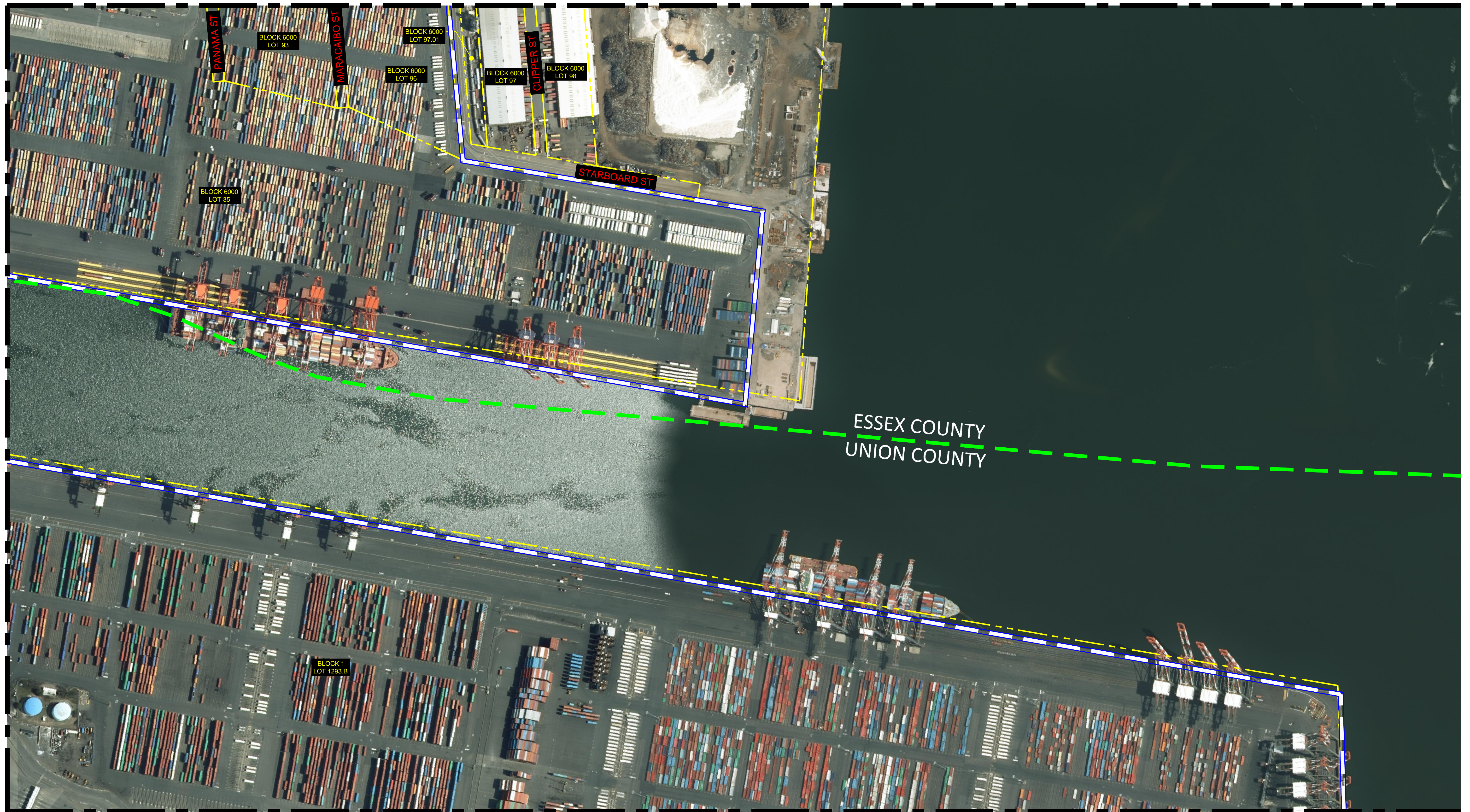
1. DATE OF IMAGERY: 2015 (NEW JERSEY GEOGRAPHIC INFORMATION NETWORK WEB MAP SERVICES)
2. SOURCE OF TAX MAP DATE: NEW JERSEY GEOGRAPHIC INFORMATION NETWORK



DESIGNED BY:	DRAWN BY:	CHECKED BY:	SKETCH SHOWING APPROXIMATE TAX LOT LINES OVERLAID ON DIGITAL IMAGERY
		REVISIONS	
		NO.	
JURISDICTION LIMIT			
HUDSON / ESSEX COUNTY			PORT NEWARK / ELIZABETH
NEW JERSEY			
KSE			
KS ENGINEERS, P.C.			
Engineers • Surveyors • Construction Managers 494 Broad Street, Newark, N.J. 07102 Phone: (973) 623-2999, Fax: (973) 623-2988			
DAVID D. RUPNARAIN	SCALE: 1" = 200'	DATE: 02/19/2016	PROJECT NO.: 2015-1735
PROFESSIONAL LAND SURVEYOR N.J. LICENSE NO. 050295			SHEET NO.: 7 OF 14

MATCHLINE - SEE SHEET S-006

MATCHLINE - SEE SHEET S-007

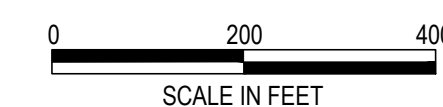
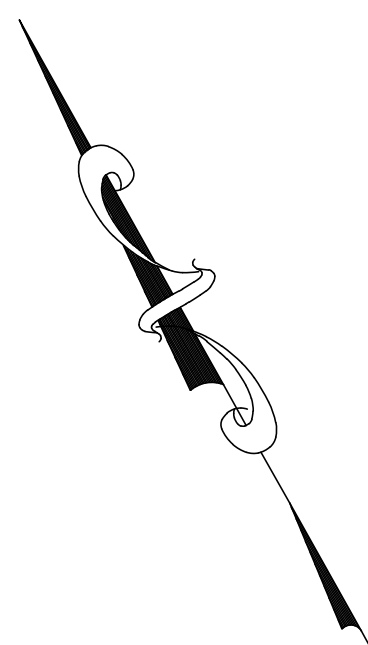


ESSEX COUNTY
UNION COUNTY

MATCHLINE - SEE SHEET S-010

NOTES:

1. DATE OF IMAGERY: 2015 (NEW JERSEY GEOGRAPHIC INFORMATION NETWORK WEB MAP SERVICES)
2. SOURCE OF TAX MAP DATE: NEW JERSEY GEOGRAPHIC INFORMATION NETWORK



DESIGNED BY:	DRAWN BY:	CHECKED BY:	SKETCH SHOWING APPROXIMATE TAX LOT LINES OVERLAID ON DIGITAL IMAGERY
		REVISIONS	
		NO.	
			JURISDICTION LIMIT HUDSON / ESSEX COUNTY PORT NEWARK / ELIZABETH NEW JERSEY
			KSE KS ENGINEERS, P.C.
			Engineers • Surveyors • Construction Managers 494 Broad Street, Newark, N.J. 07102 Phone: (973) 623-2999, Fax: (973) 623-2988
DAVID D. RUPNARAIN PROFESSIONAL LAND SURVEYOR N.J. LICENSE NO. 050295	SCALE: 1" = 200'	DATE: 02/19/2016	PROJECT NO.: 2015-1735
			SHEET NO.: 8 OF 14

MATCHLINE - SEE SHEET S-007

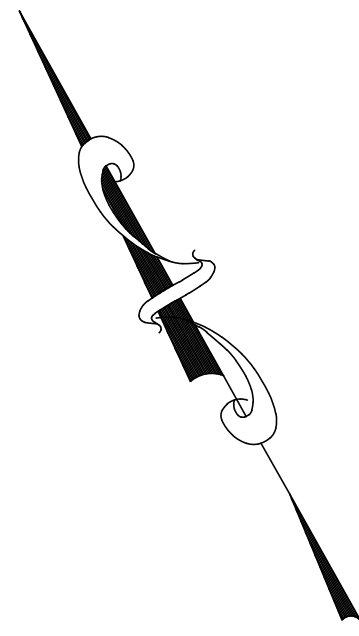


MATCHLINE - SEE SHEET S-010

MATCHLINE - SEE SHEET S-011

NOTES:

1. DATE OF IMAGERY: 2015 (NEW JERSEY GEOGRAPHIC INFORMATION NETWORK WEB MAP SERVICES)
2. SOURCE OF TAX MAP DATE: NEW JERSEY GEOGRAPHIC INFORMATION NETWORK



DESIGNED BY:	DRAWN BY:	CHECKED BY:	SKETCH SHOWING APPROXIMATE TAX LOT LINES OVERLAID ON DIGITAL IMAGERY
		REVISIONS	JURISDICTION LIMIT
		NO.	PORT NEWARK / ELIZABETH
			HUDSON / ESSEX COUNTY NEW JERSEY
			KSE
			Engineers • Surveyors • Construction Managers
			494 Broad Street, Newark, N.J. 07102
			Phone: (973) 623-2999, Fax: (973) 623-2988
DAVID D. RUPNARAIN	SCALE: 1" = 200'	DATE: 02/19/2016	PROJECT NO.: 2015-1735
PROFESSIONAL LAND SURVEYOR N.J. LICENSE NO. 050295			SHEET NO.: 9 OF 14

MATCHLINE - SEE SHEET S-008

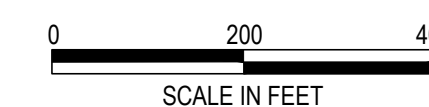
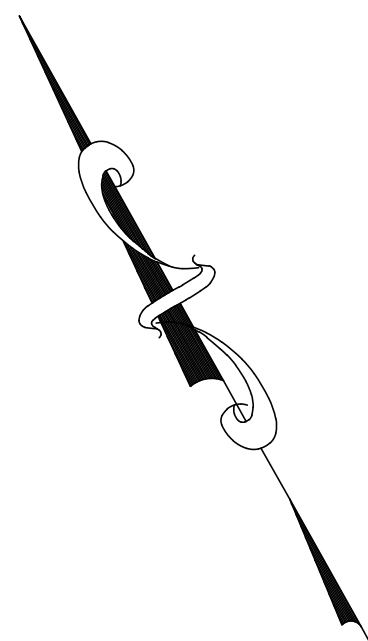
MATCHLINE - SEE SHEET S-009



MATCHLINE - SEE SHEET S-012

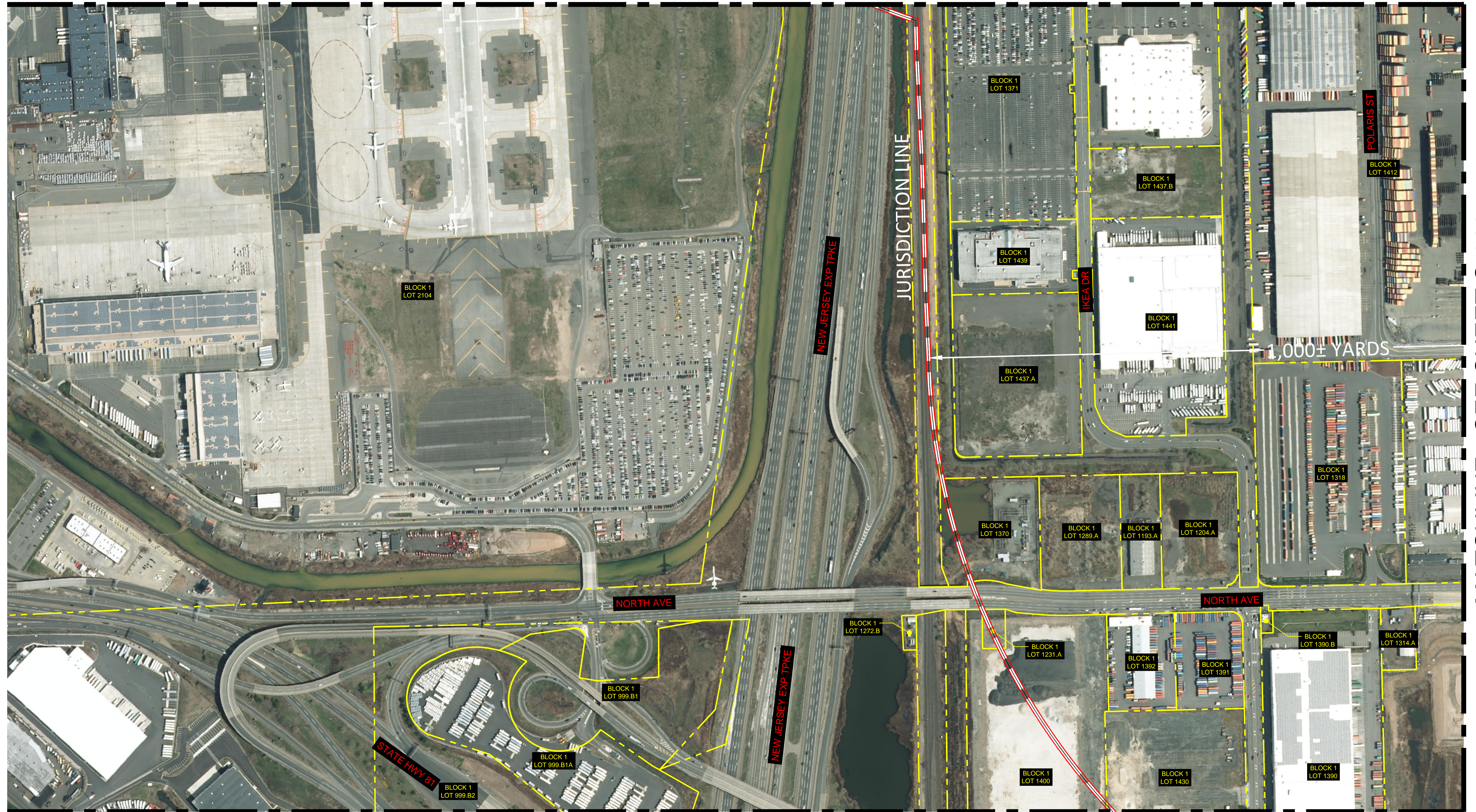
NOTES:

1. DATE OF IMAGERY: 2015 (NEW JERSEY GEOGRAPHIC INFORMATION NETWORK WEB MAP SERVICES)
2. SOURCE OF TAX MAP DATE: NEW JERSEY GEOGRAPHIC INFORMATION NETWORK



DESIGNED BY:	DRAWN BY:	CHECKED BY:	SKETCH SHOWING APPROXIMATE TAX LOT LINES OVERLAID ON DIGITAL IMAGERY
		REVISIONS	
		NO.	
			JURISDICTION LIMIT PORT NEWARK / ELIZABETH HUDSON / ESSEX COUNTY NEW JERSEY
			KSE KS ENGINEERS, P.C.
			Engineers • Surveyors • Construction Managers 494 Broad Street, Newark, N.J. 07102 Phone: (973) 623-2999, Fax: (973) 623-2988
DAVID D. RUPNARAIN PROFESSIONAL LAND SURVEYOR N.J. LICENSE NO. 050295	SCALE: 1" = 200'	DATE: 02/19/2016	PROJECT NO.: 2015-1735
			SHEET NO.: 10 OF 14

MATCHLINE - SEE SHEET S-009

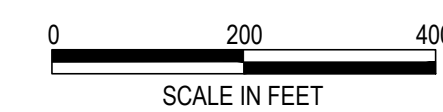
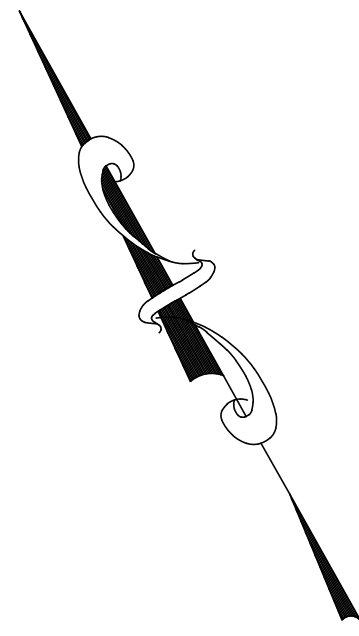


MATCHLINE - SEE SHEET S-012

MATCHLINE - SEE SHEET S-013

NOTES:

1. DATE OF IMAGERY: 2015 (NEW JERSEY GEOGRAPHIC INFORMATION NETWORK WEB MAP SERVICES)
2. SOURCE OF TAX MAP DATE: NEW JERSEY GEOGRAPHIC INFORMATION NETWORK



DESIGNED BY:	DRAWN BY:	CHECKED BY:	SKETCH SHOWING APPROXIMATE TAX LOT LINES OVERLAID ON DIGITAL IMAGERY
		REVISIONS	JURISDICTION LIMIT
		NO.	PORT NEWARK / ELIZABETH
			HUDSON / ESSEX COUNTY NEW JERSEY
			KSE
			KS ENGINEERS, P.C.
			Engineers • Surveyors • Construction Managers 494 Broad Street, Newark, N.J. 07102 Phone: (973) 623-2999, Fax: (973) 623-2988
DAVID D. RUPNARAIN	SCALE: 1" = 200'	DATE: 02/19/2016	PROJECT NO.: 2015-1735
PROFESSIONAL LAND SURVEYOR N.J. LICENSE NO. 050295			SHEET NO.: 11 OF 14

MATCHLINE - SEE SHEET S-010

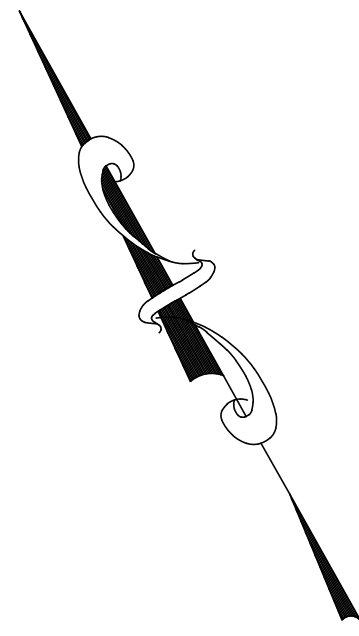
MATCHLINE - SEE SHEET S-011



MATCHLINE - SEE SHEET S-014

NOTES:

- 1. DATE OF IMAGERY: 2015 (NEW JERSEY GEOGRAPHIC INFORMATION NETWORK WEB MAP SERVICES)
- 2. SOURCE OF TAX MAP DATE: NEW JERSEY GEOGRAPHIC INFORMATION NETWORK



DESIGNED BY:	DRAWN BY:	CHECKED BY:	SKETCH SHOWING APPROXIMATE TAX LOT LINES OVERLAID ON DIGITAL IMAGERY
		REVISIONS	JURISDICTION LIMIT PORT NEWARK / ELIZABETH HUDSON / ESSEX COUNTY NEW JERSEY
		NO.	
DAVID D. RUPNARAIN PROFESSIONAL LAND SURVEYOR N.J. LICENSE NO. 050295			KSE <i>KS ENGINEERS, P.C.</i> <small>Engineers • Surveyors • Construction Managers 494 Broad Street, Newark, N.J. 07102 Phone: (973) 623-2999, Fax: (973) 623-2988</small>
SCALE:	DATE:	PROJECT NO.:	SHEET NO.:
1" = 200'	02/19/2016	2015-1735	12 OF 14

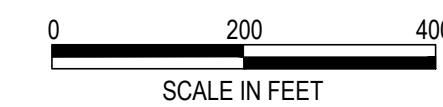
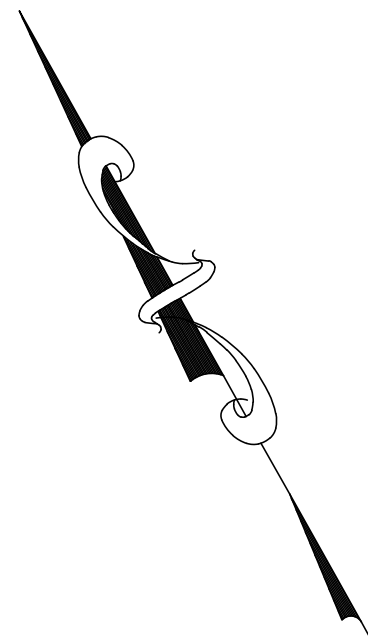
MATCHLINE - SEE SHEET S-011



MATCHLINE - SEE SHEET S-014

NOTES:

1. DATE OF IMAGERY: 2015 (NEW JERSEY GEOGRAPHIC INFORMATION NETWORK WEB MAP SERVICES)
2. SOURCE OF TAX MAP DATE: NEW JERSEY GEOGRAPHIC INFORMATION NETWORK



DESIGNED BY:	DRAWN BY:	CHECKED BY:	SKETCH SHOWING APPROXIMATE TAX LOT LINES OVERLAID ON DIGITAL IMAGERY
		REVISIONS	JURISDICTION LIMIT
		NO.	HUDSON / ESSEX COUNTY PORT NEWARK / ELIZABETH NEW JERSEY
			KSE KS ENGINEERS, P.C.
			Engineers • Surveyors • Construction Managers 494 Broad Street, Newark, N.J. 07102 Phone: (973) 623-2999, Fax: (973) 623-2988
DAVID D. RUPNARAIN PROFESSIONAL LAND SURVEYOR N.J. LICENSE NO. 050295	SCALE: 1" = 200'	DATE: 02/19/2016	PROJECT NO.: 2015-1735 SHEET NO.: 13 OF 14

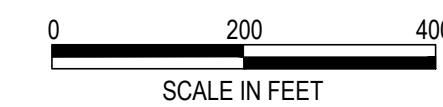
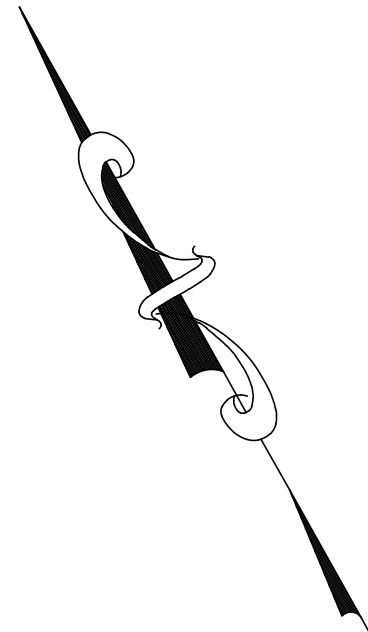
MATCHLINE - SEE SHEET S-012

MATCHLINE - SEE SHEET S-013



NOTES:

1. DATE OF IMAGERY: 2015 (NEW JERSEY GEOGRAPHIC INFORMATION NETWORK WEB MAP SERVICES)
2. SOURCE OF TAX MAP DATE: NEW JERSEY GEOGRAPHIC INFORMATION NETWORK



DESIGNED BY:	DRAWN BY:	CHECKED BY:	SKETCH SHOWING APPROXIMATE TAX LOT LINES OVERLAID ON DIGITAL IMAGERY
		REVISIONS	
		NO.	
JURISDICTION LIMIT HUDSON / ESSEX COUNTY			PORT NEWARK / ELIZABETH NEW JERSEY
KSE KS ENGINEERS, P.C.			Engineers • Surveyors • Construction Managers 494 Broad Street, Newark, N.J. 07102 Phone: (973) 623-2999, Fax: (973) 623-2988
DAVID D. RUPNARAIN PROFESSIONAL LAND SURVEYOR N.J. LICENSE NO. 050295	SCALE: 1" = 200'	DATE: 02/19/2016	PROJECT NO.: 2015-1735
			SHEET NO.: 14 OF 14